

Active Shooter with MCI at a Rural Festival...What Now?



Bud Paine, Paramedic
EMS Chief
Lifestar Rural EMS Solutions
lifestarems@yahoo.com

Active Shooter with MCI at a Rural Festival...What Now?

DISCLAIMER

I RECEIVE NO COMPENSATION FROM ANY
PRODUCT THAT I MAY MENTION DURING THE
COURSE OF THIS PRESENTATION

Active Shooter with MCI at a Rural Festival...What Now?

TARGET AUDIENCE

- RURAL COMMUNITIES AND REGIONS

Active Shooter with MCI at a Rural Festival...What Now?

TARGET AUDIENCE

- RURAL COMMUNITIES AND REGIONS
- RESOURCE LIMITED AGENCIES

Active Shooter with MCI at a Rural Festival...What Now?

Some Headlines

- **Four dead, including suspect, and at least 12 hurt in shooting at Gilroy Garlic Festival - Police still searching for possible second suspect hours later**

Active Shooter with MCI at a Rural Festival...What Now?

Some Headlines

- **Four dead, including suspect, and at least 12 hurt in shooting at Gilroy Garlic Festival** - Police still searching for possible second suspect hours later
- **Police: Man Ambushes Firefighters as They Fight Blaze** - Authorities say a 60-year-old man in Springfield opened fire on firefighters who showed up to put out a blaze at a house he was in before he turned the gun on himself.

Active Shooter with MCI at a Rural Festival...What Now?

Some Headlines

- **Four dead, including suspect, and at least 12 hurt in shooting at Gilroy Garlic Festival** - Police still searching for possible second suspect hours later
- **Police: Man Ambushes Firefighters as They Fight Blaze** - Authorities say a 60-year-old man in Springfield opened fire on firefighters who showed up to put out a blaze at a house he was in before he turned the gun on himself.
- ***Gunman Kills at Least 26 in Attack on Rural Texas Church***

Active Shooter with MCI at a Rural Festival...What Now?

Some Headlines

- **Four dead, including suspect, and at least 12 hurt in shooting at Gilroy Garlic Festival** - Police still searching for possible second suspect hours later
- **Police: Man Ambushes Firefighters as They Fight Blaze** - Authorities say a 60-year-old man in Springfield opened fire on firefighters who showed up to put out a blaze at a house he was in before he turned the gun on himself.
- ***Gunman Kills at Least 26 in Attack on Rural Texas Church***
- **California Town Wrestles With Aftermath Of Shooting Rampage** - On Nov. 14, 2017, a shooter killed five people and wounded several others in the rural Northern California town of Rancho Tehama.

Active Shooter with MCI at a Rural Festival...What Now?

Some Headlines

- **Four dead, including suspect, and at least 12 hurt in shooting at Gilroy Garlic Festival** - Police still searching for possible second suspect hours later
- **Police: Man Ambushes Firefighters as They Fight Blaze** - Authorities say a 60-year-old man in Springfield opened fire on firefighters who showed up to put out a blaze at a house he was in before he turned the gun on himself.
- ***Gunman Kills at Least 26 in Attack on Rural Texas Church***
- **California Town Wrestles With Aftermath Of Shooting Rampage** - On Nov. 14, 2017, a shooter killed five people and wounded several others in the rural Northern California town of Rancho Tehama.
- **4 firefighters shot, 2 killed at Webster, N.Y., fire in ambush**

Active Shooter with MCI at a Rural Festival...What Now?

OVERCOMING SYSTEMIC AND RURAL CHALLENGES



Active Shooter with MCI at a Rural Festival...What Now?

OVERCOMING SYSTEMIC AND RURAL CHALLENGES



Active Shooter with MCI at a Rural Festival...What Now?

HISTORICAL RURAL CHALLENGES

- **“That will never happen here...”**

Active Shooter with MCI at a Rural Festival...What Now?

HISTORICAL RURAL CHALLENGES

- **“That will never happen here...”**
- **We don’t respond to those kinds of calls until the LEOs say it’s all clear...”**

Active Shooter with MCI at a Rural Festival...What Now?

HISTORICAL RURAL CHALLENGES

- **“That will never happen here...”**
- **We don’t respond to those kinds of calls until the LEOs say it’s all clear...”**
- **“That’s not the way we do it here...”**

Active Shooter with MCI at a Rural Festival...What Now?

HISTORICAL RURAL CHALLENGES

- **“That will never happen here...”**
- **We don’t respond to those kinds of calls until the LEOs say it’s all clear...”**
- **“That’s not the way we do it here...”**
- **“If you want to wear armor you should have become a cop...”**

Active Shooter with MCI at a Rural Festival...What Now?

HISTORICAL RURAL CHALLENGES

- **“That will never happen here...”**
- **We don’t respond to those kinds of calls until the LEOs say it’s all clear...”**
- **“That’s not the way we do it here...”**
- **“If you want to wear armor you should have become a cop...”**
- **Agencies don’t get along**

Active Shooter with MCI at a Rural Festival...What Now?

HISTORICAL RURAL CHALLENGES

- “That will never happen here...”
- We don’t respond to those kinds of calls until the LEOs say it’s all clear...”
- “That’s not the way we do it here...”
- “If you want to wear armor you should have become a cop...”
- Agencies don’t get along
- LEOs don’t trust the Firefighters or EMS TACTICALLY – RECURRENT TRAINING FIXES THIS!!!!

Active Shooter with MCI at a Rural Festival...What Now?

SOME SOLUTIONS

- **ADOPT A MODIFIED RESCUE TASK FORCE BASED ON REGIONAL COUNTY NEEDS**

Active Shooter with MCI at a Rural Festival...What Now?

SOME SOLUTIONS

- **ADOPT A MODIFIED RESCUE TASK FORCE BASED ON REGIONAL COUNTY NEEDS**
 - **Determine how many agencies will be involved in your region**

Active Shooter with MCI at a Rural Festival...What Now?

SOME SOLUTIONS

- **ADOPT A MODIFIED RESCUE TASK FORCE BASED ON REGIONAL COUNTY NEEDS**
 - **Determine how many agencies will be involved in your region**
 - **Establish CLEAR Mutual Aid/MOU agreements that defines roles**

Active Shooter with MCI at a Rural Festival...What Now?

SOME SOLUTIONS

- **ADOPT A MODIFIED RESCUE TASK FORCE BASED ON REGIONAL COUNTY NEEDS**
 - Determine how many agencies will be involved in your region
 - Establish CLEAR Mutual Aid/MOU agreements that defines roles
 - **PLAN FOR CLEAR UNIFIED COMMAND!!!**

Active Shooter with MCI at a Rural Festival...What Now?

SOME SOLUTIONS

- **ADOPT A MODIFIED RESCUE TASK FORCE BASED ON REGIONAL COUNTY NEEDS**
 - Determine how many agencies will be involved in your region
 - Establish CLEAR Mutual Aid/MOU agreements that defines roles
 - **PLAN FOR CLEAR UNIFIED COMMAND!!!**
 - Keep this updated AT LEAST annually

Active Shooter with MCI at a Rural Festival...What Now?

SOME SOLUTIONS

- **ADOPT A MODIFIED RESCUE TASK FORCE BASED ON REGIONAL COUNTY NEEDS**
 - Determine how many agencies will be involved in your region
 - Establish CLEAR Mutual Aid/MOU agreements that defines roles
 - **PLAN FOR CLEAR UNIFIED COMMAND!!!**
 - Keep this updated AT LEAST annually
 - **INVOLVED AGENCIES' CAPABILITIES**
 - BLS/ALS/BOTH

Active Shooter with MCI at a Rural Festival...What Now?

SOME SOLUTIONS

- **ADOPT A MODIFIED RESCUE TASK FORCE BASED ON REGIONAL COUNTY NEEDS**
 - Determine how many agencies will be involved in your region
 - Establish CLEAR Mutual Aid/MOU agreements that defines roles
 - **PLAN FOR CLEAR UNIFIED COMMAND!!!**
 - Keep this updated AT LEAST annually
 - **INVOLVED AGENCIES' CAPABILITIES**
 - BLS/ALS/BOTH
 - **IDENTIFY RISK AREAS BY CLASSIFICATION**
 - IS IT A RECURRING EVENT OR AN ISOLATED ONE

Active Shooter with MCI at a Rural Festival...What Now?

SOME SOLUTIONS

- **ADOPT A MODIFIED RESCUE TASK FORCE BASED ON REGIONAL COUNTY NEEDS**
 - Determine how many agencies will be involved in your region
 - Establish CLEAR Mutual Aid/MOU agreements that defines roles
 - **PLAN FOR CLEAR UNIFIED COMMAND!!!**
 - Keep this updated AT LEAST annually
 - **INVOLVED AGENCIES' CAPABILITIES**
 - BLS/ALS/BOTH
 - **IDENTIFY RISK AREAS BY CLASSIFICATION**
 - IS IT A RECURRING EVENT OR AN ISOLATED ONE
 - **DOES IT HAVE AGENCY DIRECT OR AGENCY INDIRECT POTENTIAL**

Active Shooter with MCI at a Rural Festival...What Now?

ESTABLISH A PEER REVIEWED STANDARD

- RECOGNITION OF A GOLD STANDARD



Active Shooter with MCI at a Rural Festival...What Now?

ESTABLISH A PEER REVIEWED STANDARD

- RECOGNITION OF A GOLD STANDARD
- HELPS PROTECT YOUR AGENCY FROM LIABILITY



Active Shooter with MCI at a Rural Festival...What Now?

ESTABLISH A PEER REVIEWED STANDARD

- RECOGNITION OF A GOLD STANDARD
- HELPS PROTECT YOUR AGENCY FROM LIABILITY
- THIS IS THE KIND OF PEER REVIEWED STANDARD RECOGNIZED BY THE COURTS



Active Shooter with MCI at a Rural Festival...What Now?

ESTABLISH A PEER REVIEWED STANDARD

- RECOGNITION OF A GOLD STANDARD
- HELPS PROTECT YOUR AGENCY FROM LIABILITY
- THIS IS THE KIND OF PEER REVIEWED STANDARD RECOGNIZED BY THE COURTS
- DON'T HAVE TO FORMALLY ADOPT NFPA 3000



Active Shooter with MCI at a Rural Festival...What Now?

ESTABLISH A PEER REVIEWED STANDARD

- RECOGNITION OF A GOLD STANDARD
- HELPS PROTECT YOUR AGENCY FROM LIABILITY
- THIS IS THE KIND OF PEER REVIEWED STANDARD RECOGNIZED BY THE COURTS
- DON'T HAVE TO FORMALLY ADOPT NFPA 3000
- USE IT AS A GUIDE TO ESTABLISH YOUR TASK FORCE PARAMETERES



Active Shooter with MCI at a Rural Festival...What Now?

ESTABLISH A PEER REVIEWED STANDARD

- RECOGNITION OF A GOLD STANDARD
- HELPS PROTECT YOUR AGENCY FROM LIABILITY
- THIS IS THE KIND OF PEER REVIEWED STANDARD RECOGNIZED BY THE COURTS
- DON'T HAVE TO FORMALLY ADOPT NFPA 3000
- USE IT AS A GUIDE TO ESTABLISH YOUR TASK FORCE PARAMETERES
- RISK HAZARD DEVELOPMENT



Active Shooter with MCI at a Rural Festival...What Now?

ESTABLISH A PEER REVIEWED STANDARD

- RECOGNITION OF A GOLD STANDARD
- HELPS PROTECT YOUR AGENCY FROM LIABILITY
- THIS IS THE KIND OF PEER REVIEWED STANDARD RECOGNIZED BY THE COURTS
- DON'T HAVE TO FORMALLY ADOPT NFPA 3000
- USE IT AS A GUIDE TO ESTABLISH YOUR TASK FORCE PARAMETERES
- RISK HAZARD DEVELOPMENT
- TARGET GOAL FOR YOUR MODIFIED RESCUE TASK FORCE



Active Shooter with MCI at a Rural Festival...What Now?

SOLUTIONS

- **COUNTY/REGIONAL SELF-CLASSIFICATION**

Active Shooter with MCI at a Rural Festival...What Now?

SOLUTIONS

- **COUNTY/REGIONAL SELF-CLASSIFICATION**
- **RISK HAZARD ASSESSMENT**

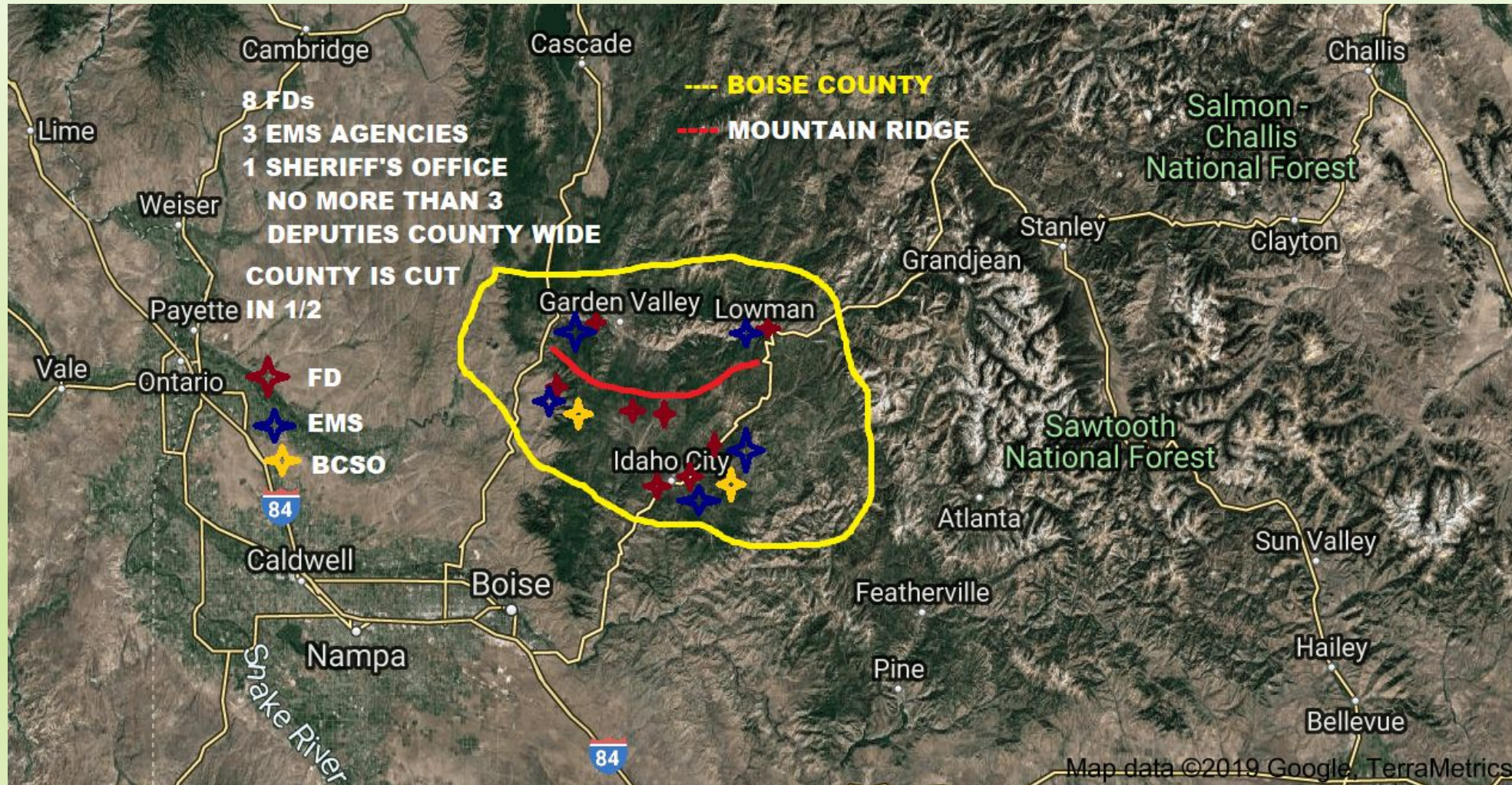
Active Shooter with MCI at a Rural Festival...What Now?

SOLUTIONS

- **COUNTY/REGIONAL SELF-CLASSIFICATION**
- **RISK HAZARD ASSESSMENT**
- **REGIONAL PLAYERS AND LOCATIONS**

Active Shooter with MCI at a Rural Festival...What Now?

AN EXAMPLE OF WHERE GEOGRAPHY CAN HINDER HAVING ONLY ONE MRTF



Active Shooter with MCI at a Rural Festival...What Now?

SOLUTIONS

- **COUNTY/REGIONAL SELF-CLASSIFICATION**
- **RISK HAZARD ASSESSMENT**
- **REGIONAL PLAYERS AND LOCATIONS**
- **REGIONAL PLAYER CAPABILITIES**

Active Shooter with MCI at a Rural Festival...What Now?

SOLUTIONS

- **COUNTY/REGIONAL SELF-CLASSIFICATION**
- **RISK HAZARD ASSESSMENT**
- **REGIONAL PLAYERS AND LOCATIONS**
- **REGIONAL PLAYER CAPABILITIES**
- **IMPLEMENTATION OF A TASK FORCE**

Active Shooter with MCI at a Rural Festival...What Now?

SOLUTIONS

- **COUNTY/REGIONAL SELF-CLASSIFICATION**
- **RISK HAZARD ASSESSMENT**
- **REGIONAL PLAYERS AND LOCATIONS**
- **REGIONAL PLAYER CAPABILITIES**
- **IMPLEMENTATION OF A TASK FORCE**
- **TRAIN...TRAIN...TRAIN...!!!!**

Active Shooter with MCI at a Rural Festival...What Now?

WHY C-TECC AS THE STANDARD



- NATIONAL/INTERNATIONAL RECOGNITION & PEER REVIEWED

Active Shooter with MCI at a Rural Festival...What Now?

WHY C-TECC AS THE STANDARD



- NATIONAL/INTERNATIONAL RECOGNITION & PEER REVIEWED
- THE DEFINITIVE STANDARD FOR CIVILIAN ACTIVE SHOOTER RESPONSES

Active Shooter with MCI at a Rural Festival...What Now?

WHY C-TECC AS THE STANDARD



- NATIONAL/INTERNATIONAL RECOGNITION & PEER REVIEWED
- THE DEFINITIVE STANDARD FOR CIVILIAN ACTIVE SHOOTER RESPONSES
- STANDARDIZED SYSTEM OF EDUCATION AND FIELD CARE

Active Shooter with MCI at a Rural Festival...What Now?

WHY C-TECC AS THE STANDARD



- NATIONAL/INTERNATIONAL RECOGNITION & PEER REVIEWED
- THE DEFINITIVE STANDARD FOR CIVILIAN ACTIVE SHOOTER RESPONSES
- STANDARDIZED SYSTEM OF EDUCATION AND FIELD CARE
- PROFESSIONAL IMAGE TO YOUR PROGRAM

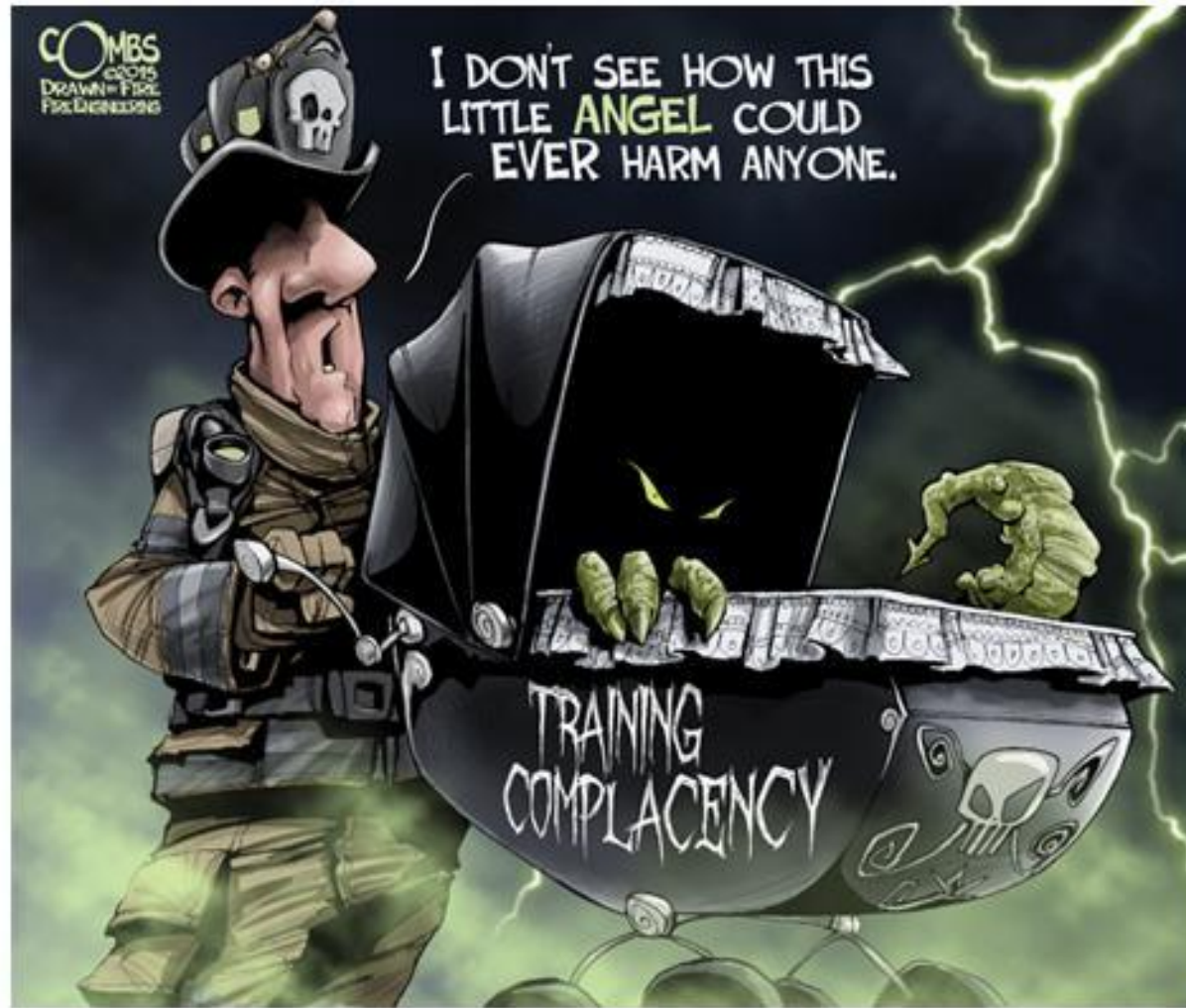
Active Shooter with MCI at a Rural Festival...What Now?

WHY C-TECC AS THE STANDARD



- NATIONAL/INTERNATIONAL RECOGNITION & PEER REVIEWED
- THE DEFINITIVE STANDARD FOR CIVILIAN ACTIVE SHOOTER RESPONSES
- STANDARDIZED SYSTEM OF EDUCATION AND FIELD CARE
- PROFESSIONAL IMAGE TO YOUR PROGRAM
- COST EFFECTIVE TRAINING THAT IS AVAILABLE TO ALL PLAYER AGENCIES

Active Shooter with MCI at a Rural Festival...What Now?



Active Shooter with MCI at a Rural Festival...What Now?

FUNDING VERBIAGE

- **KEY WORDS**

- **“REGIONAL”, OR, “COUNTY-WIDE”, OR, WHATEVER YOU CALL YOUR PLANNED AREA NAME**
- **“WORKING TO FULFILL NFPA 3000 (PS)”**
- **“MULTI-AGENCY (DISCIPLINE) PROGRAM”**
- **“VOLUNTEER” OR “PREDOMINANTLY VOLUNTEER COMBINATION AGENCY”**

Active Shooter with MCI at a Rural Festival...What Now?

FUNDING SOURCES

- **BE CREATIVE IN YOUR APPROACH!!!**
 - **ALSO THINK WALMART, INSURANCE COMPANIES, FIREHOUSE SUBS, ETC**
- **THINK OUTSIDE THE BOX FOR FUNDING SOURCES**
- **US FIRE ADMINISTRATION – ASSISTANCE TO FIREFIGHTER GRANT PROGRAM**
- **SIREN ACT of 2018 - USDA (think AFG for EMS)**
- **US DEPT. OF JUSTICE GRANT PROGRAMS**


Active Shooter with MCI at a Rural Festival...What Now?

EQUIPMENT

- **EQUIPMENT EXAMPLES**
 - **BODY ARMOR & VESTS – don't have to buy the most expensive**

Active Shooter with MCI at a Rural Festival... What Now?

ENSURE THE ARMOR HAS CERTIFICATIONS!



U.S. Department of Justice
Office of Justice Programs
National Institute of Justice

Washington, D.C. 20530

NIJ Notice of Compliance

October 17, 2017
East West Consolidated, LLC

Model Designation: TSG1012LGH
 Product Type: Ballistic Resistant Body Armor
 Standard: NIJ Standard 0101.06
 Classification: III
 Shot to Edge Distance T1: 2 inch
 Shot to Edge Distance T2: N/A
 Maximum and Minimum Sizes Tested: N/A - N/A
 Test Identification Number(s): MC02915


Dear J Taylor,

The National Institute of Justice (NIJ) has completed its evaluation of the documentation and test items representing the model identified above and determined that this product model complies with the applicable requirements.

This letter authorizes the applicant to begin applying the NIJ Mark to this model in accordance with the terms of the NIJ Compliance Testing Program Applicant Agreement.

Authorization to apply the NIJ Mark may be withdrawn by NIJ at any time in accordance with the NIJ Compliance Testing Program Applicant Agreement. End users are advised to confirm the model's current status on the NIJ Compliant Products List available at www.justnet.org/CTP.

This document may only be copied in its entirety without modification.

Sincerely,

 Michael K. O'Shea
 Senior Law Enforcement Program Manager
 US Department of Justice
 OJP/NIJ/OST/Operational Technologies Division


H.P. WHITE LABORATORY, INC.
 3114 Scarboro Road
 Street, Maryland 21154-1822
 Telephone: (410) 838-6550
 Facsimile: (410) 838-2802
 Email: info@hpwhite.com
www.hpwhite.com

17 November 2015
(HPWLI 000005096)

Tactical Scorpion Gear
 Apex, NC 27539
 Attention: Joseph

In accordance with your instructions, H.P. White Laboratory, Inc. conducted ballistic resistance testing of one soft armor sample received 13 November 2015 via Federal Express.

Testing was conducted in accordance with your instructions, and the modified provisions of NIJ-STD-0101.06 using caliber 44 Magnum, 240 grain, SJHP ammunition. The test sample was mounted on an indoor range 17.3 feet from the muzzle of a test barrel to produce zero, thirty and forty-five degree obliquity impacts. Velocity screens were positioned at 6.5 and 11.5 feet which, in conjunction with elapsed time counters (chronographs), were used to compute projectile velocities 9.0 feet from the muzzle. Table I is a summary of the enclosed data record.



H.P. White Laboratory, Inc.
 BALLISTIC RESISTANCE TEST

Client : 5885: TACTICAL SCORPION GEAR
 Job No. : 000005096 Test Date : 11/16/15

TEST PANEL
 Manufacturer : TACTICAL SCORPION GEAR
 Size : 20 x 15
 Thicknesses : NA
 Avg. Thick. : NA
 Description : PROPRIETARY

SET-UP
 Shot Spacing : PER NIJ-STD-0101.06
 Witness Panel : CLAY
 Obliquity : 0, 30, 45 deg.
 Backing Material : NA
 Conditioning : DRY

AMMUNITION
 (1) : 44 MAG, SJHP, 240 gr.
 (2) :
 (3) :
 (4) :

APPLICABLE STANDARDS OR PROCEDURES
 (1) NIJ-STD-0106.01 LEVEL IIIA (MODIFIED)
 (2) PRE TEST CLAY DROPS: 18mm, 20mm, 19mm, 20mm, 19mm
 (3) PRE TEST CLAY TEMP: 98.7 F


TABLE I. SUMMARY OF RESULTS

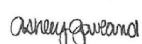
Sample Number	Weight (lb)	Plies	Obliquity	Caliber	Shots	Ballistic Threat		Results	
						Velocity (fps) Max.	Min.	Penetrations	Deformation (mm) (a)
3235	2.11	Na	0	.44 Magnum	4	1450	1432	0	42/39
			30		1	1425	0	Na	
			45		1	1442	0	Na	
			45		1	1442	0	Na	

(a) Deformation of 5.5 inch clay backing.

This report is based on data obtained from having tested only the sample submitted, and should not be interpreted as an endorsement by H.P. White Laboratory, Inc. of the continuing quality, or performance, of any other items of the same, or similar, design.

The test sample is being returned via Federal Express. Should you have any questions regarding this matter, or if we may be of any further service, please do not hesitate to contact us.

Prepared By

 Tina Chaffman

Reviewed By

 Ashley Gowland

Shot No.	Ammo.	Time 1 (usec)	Velocity 1 (ft/s)	Time 2 (usec)	Velocity 2 (ft/s)	Avg. Vel (ft/s)	Penetration	Footnotes
1	1	3455	1447	3441	1453	1450	None	DEF, 39mm
2	1	3450	1449	3447	1451	1450	None	DEF, 42mm
3	1	3467	1434	3495	1431	1432	None	DEF, 41mm
4	1	3510	1425	3510	1425	1425	None	(a)
5	1	3473	1440	3464	1443	1442	None	(b)
6	1	3455	1447	3446	1451	1449	None	

REMARKS:

FOOTNOTES:
 (a) SHOT IMPACTED AT A 30 DEGREE ANGLE
 (b) SHOT IMPACTED AT A 45 DEGREE ANGLE

Filename : 000005096 (TEST SAMPLE 3235) 5885 TACTICAL SCORPION GEAR.Pdf

Page 1 of 2

Active Shooter with MCI at a Rural Festival...What Now?

- RURAL AREAS CAN HAVE TROUBLE FINDING AFFORDABLE OPTIONS
- AFFORDABLE ARMOR AND VESTS ARE AVAILABLE THROUGH RESEARCH
- ORDER “BY THE SEAT” AS OPPOSED TO EACH INDIVIDUAL - SAVES \$\$\$
- LIFESTAR USES TACTICAL SCORPION FOR BALLISTIC PLATES*
<https://tacticalscorpiongear.com/>
- LIFESTAR USES EXTREEM TACTICAL FOR VESTS AND GEAR*
<https://extreemtactical.com/>

* (LIFESTAR RECEIVES NO BENEFIT FROM THESE SUGGESTIONS)

Active Shooter with MCI at a Rural Festival...What Now?

EQUIPMENT (CONT.)

- EQUIPMENT EXAMPLES
 - BODY ARMOR & VESTS – don't have to buy the most expensive
 - MEDICAL EQUIPMENT – DISPOSABLE AND DURABLE

Active Shooter with MCI at a Rural Festival...What Now?

EQUIPMENT (CONT.)

- **EQUIPMENT EXAMPLES**
 - **BODY ARMOR & VESTS – don't have to buy the most expensive**
 - **MEDICAL EQUIPMENT – DISPOSABLE AND DURABLE**
 - **SPECIALIZED VEHICLES**

Active Shooter with MCI at a Rural Festival...What Now?

EQUIPMENT (CONT.)

- **EQUIPMENT EXAMPLES**
 - **BODY ARMOR & VESTS – don't have to buy the most expensive**
 - **MEDICAL EQUIPMENT – DISPOSABLE AND DURABLE**
 - **SPECIALIZED VEHICLES**
 - **FUNDING FOR STIPENDS AND MISCELLANEOUS COSTS**

Active Shooter with MCI at a Rural Festival...What Now?

EQUIPMENT (CONT.)

- **EQUIPMENT EXAMPLES**
 - **BODY ARMOR & VESTS – don't have to buy the most expensive**
 - **MEDICAL EQUIPMENT – DISPOSABLE AND DURABLE**
 - **SPECIALIZED VEHICLES**
 - **FUNDING FOR STIPENDS AND MISCELLANEOUS COSTS**
 - **LOCAL COMMUNITY RESOURCES**

My takeaways:

- 1.) Rural areas are no longer secluded, safe areas from Active Shooter Responses, as much as in the past - the issue, and incidents, are increasing everywhere, and rural areas are becoming more of a desired target BECAUSE of a lack of resources.
- 2.) Regional rural agencies need to start thinking outside the box of, "That'll never happen here", to a mindset of, "That could happen here!"
- 3.) The equipment needed by rural agencies IS affordable if researched thoroughly. The funding IS out there! You just have to research and APPLY!
- 4.) The need to constantly train TOGETHER (meaning all agencies involved) is an absolute must! In just the last ten (10) years, every rural area that had an Active Shooter response, whether an ambush style attack from staged snipers that set their homes on fire to draw in first responders (NY/OR), or at rural festivals where LEOs were already on site (CA), were immediately overwhelmed because they did not plan for the event.

Active Shooter with MCI at a Rural Festival...What Now?

QUESTIONS?